



### AccuDiag™ PAPP-A ELISA Kit

REF 4229

PIC FT4229YU1

IVD See External Label 2°C 8°C 96 Tests

PAPP-A ELISA	
Method	Enzyme Linked Immunosorbent Assay
Sample	10 µL Serum
Incubation Time	110 minutes
Shelf Life	12 Months from the manufacturing date
Sensitivity	3.12 mIU/L

#### PRODUCT FEATURES

- Very easy to use with little training
- Highly specific and consistent Assay
- Provides accurate results quickly
- Reading of results both visually and as absorbance data

#### INTENDED USE

The Diagnostic Automation, Inc. (DAI) PAPP-A ELISA is an enzyme immunoassay for the quantitative *in vitro* diagnostic measurement of PAPP-A Vitamin D in human serum.

#### SIGNIFICANCE AND SUMMARY

Trisomy 21, 18 and 13 are three conditions that can cause ill effects to a fetus and, therefore, an infant. Screening for markers and inherent trends has been of interest over the years. One of the proteins of interest for these trisomy disorders is PAPP-A, pregnancy associated plasma protein A. This protein can be found in the serum of every individual, but the concentration rises in maternal serum as gestation time progresses. In studies, a correlation has been shown between the decreased level of PAPP-A and the occurrence of trisomy disorders, particularly Trisomy 21, also known as Down's Syndrome. Along with a few other

markers like AFP, uE3, and hCG, trends in PAPP-A have been found to elude to trisomy disorders.<sup>1,2,3,4,5,6</sup>

PAPP-A is produced primarily by the placenta during pregnancy. This glycoprotein has molecular weight of 740000 and tends to exist as a heterotetrameric dimer with ProMBP, preform major basic protein. The concentration of PAPP-A in maternal blood increases over the time of pregnancy as the placenta and fetus grows because it is a product of trophoblast. In general, the concentration levels of this protein in maternal serum is indicative of threatened abortion, preterm birth, intrauterine growth restriction, ectopic gravidity, preeclampsia or diabetes mellitus. When tested during the first trimester or pregnancy, PAPP-A is the major marker of Down's Syndrome.<sup>3,7,8,9</sup>

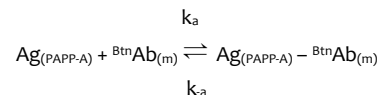
The DAI PAPP-A ELISA test is designed specifically for the testing of the heterotetrameric form important during pregnancy. Another form of PAPP-A also exists in serum, but it is a dimeric form associated with coronary and cardiac conditions. Tests developed for use on pregnancy patients are not designed to test for this dimeric form. When evaluation of this protein is done, it is often compared to the Multiple of Medians (MoM) and represented as a percent of an in-house establish median. Without easy access to a IRP for PAPP-A, this method allows an easier way to compare results between laboratories and testing methods, allowing for a type of reference value to be established.<sup>2,5,8,9</sup>

#### ASSAY PRINCIPLE

##### Immunoenzymometric Sequential Assay (TYPE 4):

The essential reagents required for an immunoenzymometric assay include high affinity and specificity antibodies (enzyme and immobilized), with different and distinct epitope recognition, in excess, and native antigen. In this procedure, the immobilization takes place during the assay at the surface of a microplate well through the interaction of streptavidin coated on the well and exogenously added biotinylated monoclonal anti-PAPP-A antibody.

When monoclonal biotinylated antibody is mixed with a serum containing the PAPP-A antigen, a reaction results between the PAPP-A antigen and the antibody, to form an antibody-antigen complex. Simultaneously the biotin attached to the antibody binds to the streptavidin coated on the microwells resulting in immobilization of the complex. The interaction is illustrated by the following equation:



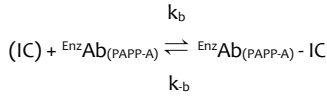
$B^{tn}Ab_{(m)}$  = Biotinylated Monoclonal Antibody (Excess Quantity)  
 $Ag_{(PAPP-A)}$  = Native Antigen (Variable Quantity)  
 $Ag_{(PAPP-A)} - B^{tn}Ab_{(m)}$  = Antigen-Antibody complex (variable Quan.)  
 $k_a$  = Rate Constant of Association  
 $k_{-a}$  = Rate Constant of Disassociation

$Ag_{(PAPP-A)} - B^{tn}Ab_{(m)} + Streptavidin_{C.W.} \Rightarrow immobilized\ complex\ (IC)$   
 $Streptavidin_{C.W.}$  = Streptavidin immobilized on well  
 $Immobilized\ complex\ (IC)$  = Ag-Ab bound to the well

After a suitable incubation period, the antibody-antigen bound fraction is separated from unbound antigen by decantation or aspiration. Another antibody (direct at a different epitope) labeled with an enzyme is added. Another interaction occurs to form an enzyme labeled antibody-antigen-biotinylated-antibody complex on the surface of the wells. Excess enzyme is washed off via a wash step. A suitable substrate is added to produce color measurable with the use of a microplate spectrophotometer. The enzyme activity on the well is directly proportional to the native free antigen concentration. By utilizing several



different serum references of known antigen concentration, a dose response curve can be generated from which the antigen concentration of an unknown can be ascertained.



$\overset{Enz}{Ab}_{(PAPP-A)}$  = Enzyme labeled Antibody (Excess Quantity)

$\overset{Enz}{Ab}_{(PAPP-A)} - IC$  = Antigen-Antibodies Complex

$k_b$  = Rate Constant of Association

$k_{-b}$  = Rate Constant of Dissociation

### SPECIMEN COLLECTION AND PREPARATION

The specimens shall be blood, serum in type, and taken with the usual precautions in the collection of venipuncture samples should be observed. For accurate comparison to establish normal values, a fasting morning serum sample should be obtained. The blood should be collected in a plain redtop venipuncture tube without additives or anti-conjugates; a red top gel separator tube (also known as a "Tiger" top tube) can be used. Allow the blood to clot. Centrifuge the specimen to separate the serum from the cells.

Samples may be refrigerated at 2-8°C for a maximum period of five (5) days. If the specimen(s) cannot be assayed within this time, the sample(s) may be stored at temperature of -20°C for up to 30 days. Avoid use of contaminated devices. Avoid repetitive freezing and thawing. When assayed in duplicate, 0.020ml (20µl) of the specimen is required.

In patients receiving therapy with high biotin doses (i.e.> 5 mg/day), no sample should be taken until at least 8 hours after the las biotin administration, preferably overnight to ensure fasting sample.

### REAGENTS

#### Materials provided with the test kit

- A. PAPP-A Calibrators – 0.5 ml/vial, A-F**  
Six (6) vials of serum reference for PAPP-A at concentrations of 0 (A), 0.64 (B), 1.6 (C), 3.2 (D), 9.6 (E), and 32 (F) in µg/ml. A preservative has been added. Store at 2-8°C.  
**Note:** To convert µg/ml to mIU/L, multiply by 156.25  
Ex. 32 µg/ml x 156.25 = 5000 mIU/L
- B. PAPP-A Enzyme Reagent – 12 ml/vial**  
One (1) vial of PAPP-A Antibody-horseradish peroxides (HRP) conjugate in a protein-stabilizing matrix with a preservative. Store at 2-8°C.
- C. PAPP-A Biotin Reagent – 12 ml/vial**  
One (1) vial containing biotinylated monoclonal mouse IgG in buffer, dye, and preservative. Store at 2-8°C.  
**Note: Patients must be fasting from biotin therapy/supplements for 8 hours to prevent interference in the test.**
- D. PAPP-A Control – 0.5 ml/vial**  
One (1) vial of serum reference for PAPP-A at concentration established (exact value listed on label). A preservative has been added. Store at 2-8°C.
- E. PAPP-A Diluent – 5.0ml/vial**  
One (1) vial of human serum based buffer with salts, surfactants, and preservatives. Store at 2-8°C.
- F. Streptavidin Coated Plate – 96 wells**  
One 96-well microplate coated with streptavidin and packaged in an aluminum bag with a drying agent. Store at 2-8°C.
- G. Wash Solution Concentrate – 20ml/vial**

One (1) vial contains a surfactant in buffered saline. A preservative has been added. Store at 2-8°C.

**H. Substrate Solution – 12ml/vial**

One (1) vial contains tetramethylbenzidine (TMB) and hydrogen peroxide (H<sub>2</sub>O<sub>2</sub>) in buffer. Store at 2-8°C.

**I. Stop Solution – 8ml/vial**

One (1) vial contains of a strong acid (0.5M H<sub>2</sub>SO<sub>4</sub>). Store at 2-8°C.

**J. Product Insert**

**Note 1:** Do not use reagents beyond the kit expiration date.

**Note 2:** Avoid extended exposure to heat and light. Opened reagents are stable for sixty (60) days when stored at 2-8°C. Kit and component stability are identified on label.

**Note 3:** Above reagents are for a single 96-well microplate.

#### Materials required but not provided

1. Pipette capable of delivering 0.010 ml (10µl), 0.050 ml (50µl) and 0.100 ml (100µl) with a precision of better than 1.5%.
2. Dispenser(s) for repetitive deliveries of 0.100 & 0.350ml (100 & 350µl) volumes with a precision of better than 1.5%.
3. Microplate washer or a squeeze bottle (optional).
4. Microplate Reader with 450nm and 620nm wavelength absorbance capability.
5. Absorbent paper for blotting the microplate wells.
6. Plastic wrap or microplate cover for incubation steps.
7. Vacuum aspirator (optional) for wash steps.
8. Timer.
9. Quality control materials.

### PRECAUTIONS

**For in Vitro Diagnostic Use. Not for internal or External Use in Humans or Animals.**

All products that contain human serum have been found to be non-reactive for Hepatitis B surface Antigen, HIV 1&2 and HCV Antibodies by FDA required tests. Since no known test can offer complete assurance that infectious agents are absent, all human serum products should be handled as potentially hazardous and capable of transmitting disease. Good laboratory procedures for handling blood products can be found in the Center for Disease Control / National Institute of Health, "Biosafety in Microbiological and Biomedical laboratories," 2<sup>nd</sup> Edition, 1988, HHS Publication No. (CDC) 8808395.

**Safe Disposal of kit components must be according to local regulatory and statutory requirements.**

### REAGENT PREPARATION

**Wash Buffer:** Dilute contents of wash solution to 1000 ml with distilled or deionized water in a suitable storage container. Diluted buffer can be stored at 2-30°C for up to 60 days.

**Note 1:** Do not use the substrate if it looks blue.

**Note 2:** Do not use reagents that are contaminated or have bacteria growth



### ASSAY PROCEDURE

Before proceeding with the assay, bring all reagents, serum reference and controls to room temperature (20-27°C). \*\*Test Procedure should be performed by skilled individual or trained professional\*\*

- Format the microplates' wells for each serum reference, control and patient specimen to be assayed in duplicate. **Replace any unused microwell strips back into the aluminum bag, seal and store at 2-8°C.**
- Pipette 0.010ml (10µl) of the appropriate serum reference, control or specimen into the assigned well.
- Add 0.100ml (100µl) of the PAPP-A Biotin Reagent to all wells.
- Swirl the microplate gently for 20-30 seconds to mix
- Cover and incubate for 60 minutes at room temperature.
- Discard the contents of the microplate by decantation or aspiration. If decanting, blot the plate dry with absorbent paper.
- Add 0.350 ml (350µl) of wash buffer (see Reagents Preparation Section), decant (tap and blot) or aspirate. Repeat four (4) additional times for a total of five (5) washes. An automatic or manual plate washer can be used. Follow the manufacturer's instruction for proper usage. If a squeeze bottle is employed, fill each well by depressing the container (avoiding air bubbles) to dispense the wash. Decant the wash and repeat two (2) additional times.
- Add 0.100ml (100µl) of PAPP-A Enzyme Reagent to all wells.
- Cover and incubate for 30 minutes at room temperature.
- Discard the contents of the microplate by decantation or aspiration. If decanting, blot the plate dry with absorbent paper.
- Add 0.350ml (350µl) of wash buffer (see Reagent Preparation Section), decant (tap and blot) or aspirate.
- Repeat four (4) additional times for a total of five (5) washes. An automatic or manual plate washer can be used. Follow the manufacturer's instruction for proper usage. If a squeeze bottle is employed, fill each well by depressing the container (avoiding air bubbles) to dispense the wash. Decant the wash and repeat four (4) additional times.
- Add 0.100ml (100µl) of substrate solution to all wells. Always add reagents in the same order to minimize reaction time difference between wells. **DO NOT SHAKE THE PLATE AFTER SUBSTRATE ADDITION**
- Incubate at room temperature for 15-20 minutes.
- Add 0.050ml (50µl) of stop solution to each well and gently mix for 15-20 seconds. **Always add reagents in the same order to minimize reaction time difference between wells.**
- Read the absorbance in each well at 450nm (using a reference wavelength of 620-630nm). The results should be read within fifteen (15) minutes of adding the stop solution.

**Note:** Dilute the samples suspected of concentrations higher than 32 µg/ml with PAPP-A diluent and multiply result by dilution factor. For a 1:5 dilution add 40µl of diluent to 10µl of high concentration sample.

### CALCULATION OF RESULTS

A dose response curve is used to ascertain the concentration of PAPP-A in unknown specimens.

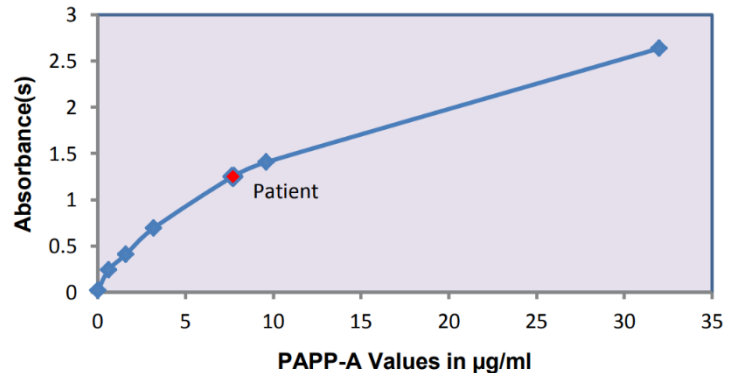
- Record the absorbance obtained from the printout of the microplate reader as outlined in Example 1.
- Plot the absorbance for each duplicate serum reference versus the corresponding PAPP-A concentration in mIU/L on linear graph paper.
- Connect the points with a best-fit curve.
- To determine the concentration of PAPP-A for an unknown, locate the average absorbance of the duplicate for each unknown on the vertical axis

of the graph, find the intersecting point on the curve, and read the concentration (in µg/ml) from the horizontal axis of the graph (the duplicate of the unknown may be average as indicated). In the following example, the average absorbance in the patient/ sample (1.251) intersects the dose response curve at (7.7 µg/ml) PAPP-A concentration (See figure 1).

**Note:** Computer data reduction software designed for ELISA assay may also be used for the data reduction. **If such software is utilized, the validation of the software should be ascertained.**

Sample I.D.	Well Number	Abs (A)	Mean Abs (B)	Value (µg/ml)
CAL A	A1	0.019	0.021	0
	A2	0.022		
CAL B	B1	0.208	0.243	0.64
	B2	0.277		
CAL C	A6	0.421	0.410	1.6
	B6	0.399		
CAL D	C6	0.696	0.695	3.2
	D1	0.693		
CAL E	E1	1.420	1.406	9.6
	E2	1.391		
CAL F	F1	2.625	2.635	32.0
	F2	2.644		
Ctrl #1	C3	0.880	0.895	4.6
	D3	0.910		
Ctrl #2	E3	1.675	1.787	11.6
	F3	1.898		
Patient	G1	1.306	1.251	7.7
	H1	1.196		

FIGURE 1



\*The above data and figure below is for example only. Do not use it for calculating results.

### Q.C. PARAMETERS

In order for the assay results to be considered valid the following criteria should be met:

- The absorbance (OD) of calibrator 0 ng/ml should be  $\geq 1.3$ .
- Four out six quality control pools should be within the established ranges.



### RISK ANALYSIS

The MSDS and Risk Analysis Form for this product are available on request from Diagnostic Automation, Inc.

### ASSAY PERFORMANCE

- It is important that the time of reaction in each well is held constant to achieve reproducible results.
- Pipetting of sample should not extend beyond ten (10) minutes to avoid assay drift.
- Highly lipemic, hemolyzed or grossly contaminated specimen (s) should not be used.
- If more than one (1) plate is used. It is recommended to repeat the dose response curve.
- The addition of substrate solution initiates a kinetic reaction, which is terminated by the addition of the stop solution. Therefore, the substrate to eliminate any time-deviation during reaction.
- Plate readers measure vertically. Do not touch the bottom of the wells.
- Failure to remove adhering solution adequately in the aspiration or decantation wash step(s) may result in poor replication and spurious results.
- Use components from the same lot. No intermixing of reagents from different batches.
- Accurate and precise pipetting, as well as following the exact time and temperature requirement prescribed, is essential. Any deviation from the procedure may yield inaccurate results.
- All applicable national standards, regulations and laws, including, but not limited to, good laboratory procedures, must be strictly followed to ensure compliance and proper device usage.
- It is important to calibrate all the equipment e.g. Pipettes, Reader, Washers and/or the automated instruments used with this device, and to perform routine preventative maintenance.
- Risk Analysis, as required by CE Mark IVD Directive 98/79/EC, for this and other devices made by Diagnostic Automation, Inc., can be requested via email from [Tech@rapidtest.com](mailto:Tech@rapidtest.com).

### INTERPRETATION

- Measurements and interpretation of results must be performed by skilled individual or trained professional.**
- Laboratory results alone are only one aspect for determining patient care and should not be sole basis for therapy, particularly if the results conflict with other determinants.
- The reagents for the test system procedure have been formulated to eliminate maximal interference: however, potential interaction between rare serum specimens and test reagents can cause erroneous results. Heterophilic antibodies often cause these interactions and have been known to be problems for all kinds of immunoassays. (Boscato LM Stuart MC. 'Heterophilic antibodies: a problem for all immunoassays' Clin, Chem. 1998;3427033). For diagnostic purposes, the results from this assay should be used in combination with clinical examination, patient history, and all other clinical findings.
- For valid test results, adequate controls and other parameters must be within the listed ranges and assay requirements.
- If test kits are altered, such as by mixing parts of different kits, which could produce false test results, or if results are incorrectly interpreted, Diagnostic Automation, Inc. shall have no liability.

- If computer controlled data reduction is used to interpret the results of the test, it is imperative that the predicted values for the calibrators fall within 10% of the assigned concentrations.

### EXPECTED RANGES OF VALUES

In agreement with established reference intervals for a "normal" adult population, the expected ranges for the DAI PAPP-A ELISA test are detailed in Table 1.

It is recommended to compare values based on the Multiple of Median (MoM) established for the laboratory when assessing patient samples. By dividing the value of the patient sample by the MoM will give a percent value is used frequently for evaluation.

TABLE 1  
Expected values for the PAPP-A ELISA

Term of Gestation (full weeks)	PAPP-A Concentration (µg/ml)
9	3.86
10	7.1
11	10.1
12	16.68
13	23.2

It is important to keep in mind that establishment of a range of values, which can be expected to be found by given method for a population of "normal" persons, is dependent upon a multiplicity of factors: the specificity of the method, the population tested and the precision of the method in the hands of the analyst. For these reasons, each laboratory should depend upon the range of expected values established by the manufacturer only until an in-house range can be determined by the analysts using the method with a population indigenous to the area in which the laboratory is located.

### QUALITY CONTROL

Each laboratory should assay controls at levels in the low, normal and high range for monitoring assay performance. These controls should be treated as unknowns and values determined in every test procedure performed. Quality control charts should be maintained to follow the performance of the supplied reagents. Pertinent statistical methods should be employed to ascertain trends. The individual laboratory should set acceptable assay performance limits. In addition, maximum absorbance should be consistent with past experience. Significant deviation from established performance can indicate unnoticed change in experimental conditions or degradation of kit reagents. Fresh reagents should be used to determine the reason for the variations.

### PERFORMANCE CHARACTERISTICS

#### Precision

The total precision of the PAPP-A AccuDiag™ Microplate ELISA Test System was determined by analyses on six different levels of pool control and patient sera. The mean values, standard deviation and coefficient of variation for each of these control sera are presented in Table 2.



**TABLE 2**  
Precision data for the PAPP-A Test System

Sample	Mean Value (pg/ml)	Within-Run Precision		Total Precision (n=80)	
		SD	CV%	SD	CV%
Control 1	0.69	0.03	3.65	0.05	7.89
Control 2	2.17	0.14	6.29	0.20	9.33
Control 3	8.25	0.42	5.11	0.60	7.29
Patient 1	1.35	0.05	3.68	0.13	9.51
Patient 2	5.12	0.22	4.24	0.43	8.49
Patient 3	28.02	1.51	5.39	2.60	9.29

\*As measured in forty experiments in duplicate over a 20 day period.

### Sensitivity

The LoB/LoD/LoQ of the PAPP-A AccuDiag™ ELISA Test System were calculated in conformance with CLSI EP17-A2 Protocols for Determination of Limits of Detection of Limits of Quantitation. The LoB is 0.019 µg/ml and the LoD=LoQ=0.074 µg/ml.

### Accuracy

#### Linearity

The linearity of the PAPP-A AccuDiag™ ELISA test system was tested by diluting human serum samples containing high levels of PAPP-A (10 to 37 µg/ml) with low PAPP-A diluent. The system produces excellent linearity through the range of the test up to 37 µg/ml.

### Recovery

The recovery of the PAPP-A AccuDiag™ Microplate ELISA Test System was calculated for five patient samples spiked with 0.5, 2.0, 4.0, 10.0, and 30.0 µg/ml PAPP-A. Recoveries were determined to be within 15% of the expected values for all samples.

### Method Comparison

The PAPP-A AccuDiag™ ELISA Test System was compared with a reference immunoassay method. Biological specimens from low, normal and relatively high PAPP-A level populations were used; the values ranged from 0.1 µg/ml – 36 µg/ml. The total number of such specimens was 50. The least square regression equation and the correlation coefficient were computed for this PAPP-A ELISA in comparison with the reference method.

Method	Mean	Least Square Regression Analysis	Correlation Coefficient
DAI (y)	6.52	$y = 0.34 + 0.97(x)$	0.992
Reference (x)	6.68		

### Specificity

The % cross reactivity of the PAPP-A antibody to selected substances was evaluated by adding the interfering substance to a serum matrix at various concentrations. The cross-reactivity was calculated by deriving a ratio between doses of interfering substance to dose of PAPP-A needed to displace the same amount of labeled analog.

**TABLE 5**

Substance	Cross Reactivity
Free βhCG	ND
AFP	ND
hPRL	ND
FSH	ND

## REFERENCES

- Sorensen S. *Clinical Chemistry*. 67, 1023-1031 (2011).
- Qin QP. *Clinical Chemistry*. 43, 2323-2332 (1997).
- Fialova L. Malbohan IM. *Bratisl Lek Listy*. 103, 194-205 (2002).
- Kagan KO. *Ultrasound Obstet Gynecol*. 31, 493-502 (2008).
- Spencer K. *Ultrasound Obstet Gynecol*. 13, 231-237 (1999).
- Baluja-Conde IB. *Rev Biomed*. 259-271 (2005)
- Smith GCS. *The Journal of Clinical Endocrinology and Metabolism*.
- Ong YTC. *British Journal of Obstetrics and Gynecology*. 107, 1265-1270 (2000).
- Bischof P. *Archives of Gynecology*. 227, 315-326 (1979).

## MANUFACTURER AND BRAND DETAILS

**ISO 13485:2016**

**ISO 13485**  
Quality Management for Medical Devices  
**CERTIFIED**

**Diagnostic Automation/Cortez Diagnostics, Inc.**  
21250 Califa Street, Suite 102 and 116,  
Woodland Hills, California 91367 USA

<b>Date Adopted</b>	2022-12
<b>Brand Name</b>	AccuDiag™
<b>REF</b> 4229	AccuDiag™ - PAPP-A ELISA Kit
<b>PIC</b>	FT4229YU1
<b>EU</b> <b>REP</b>	AR Experts BV, Boeingavenue 209 1119 PD Schiphol-Rijk, The Netherlands <a href="mailto:info@ar-experts.eu">info@ar-experts.eu</a>

**Revision Date: 2022-11-23**